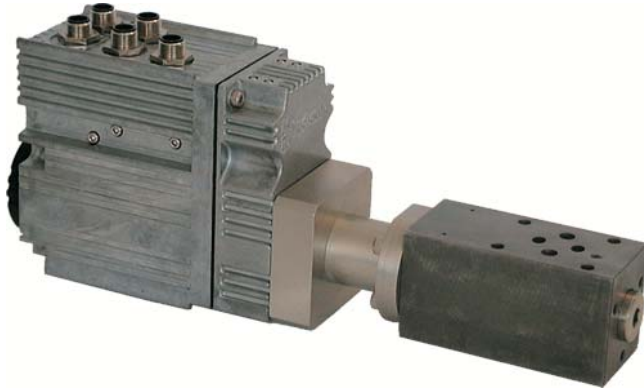


## Pressure-reduction valve NG 6

electrically adjustable,  
pressure range 8-80 bar

- Safety by automatic lock, spindle drive
- high reproducibility
- direct controlled, damped piston valve

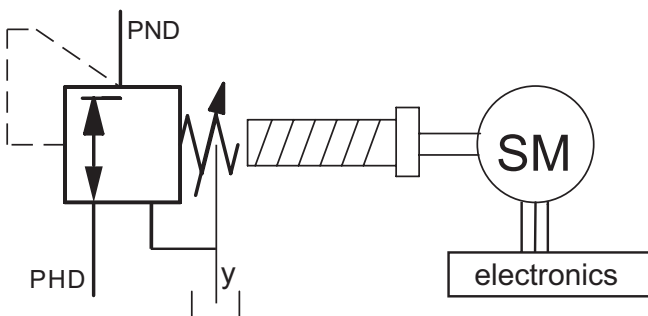


### Specifications according to VDI 3267

#### General

Id.Nr.	32269
Configuration number	see symbol
Mounting method	sandwich plate
Method of actuating	motorically
Fastening	4x M5
Mounting position	mountable in any position
Ambient temperature	°C 5 to +50
Mass valve	kg 4,1

#### Symbol:



#### Hydraulic

Operating pressure range		
Supply pressure max.	bar	300
Set pressure range	bar	8 - 80
Adjusting time 8 - 120 bar	s	6,5
Viscosity	mm <sup>2</sup> /s	15 to 68
max. rate of flow	l/min	30

#### Electrical rating

Electric power supply	24VDC (18..28 VDC) 1A
residual ripple max.	3V <sub>ss</sub>
further Data	data sheet on request
Page Nr.	79-0031-0008-00
Allowed command value	digital

The pressure adjustment at the control valve is motor-driven by the stepper-motor. The required control electronics is integrated in the valve.

The motor acts by spindle drive, direct mechanically on to the valve adjustment. The pressure control is via the direct controlled, damped piston valve.

The spindle drive has a mechanical automatic lock, so that the set pressure is maintained even when distribution voltage is disconnected.

#### Options:

- further pressure ranges
- further adjusting speeds
- Allowed command value: analog, Profibus, CAN
- y at T possible
- Central connector 17-pol

The specifications given herein are subject to alteration



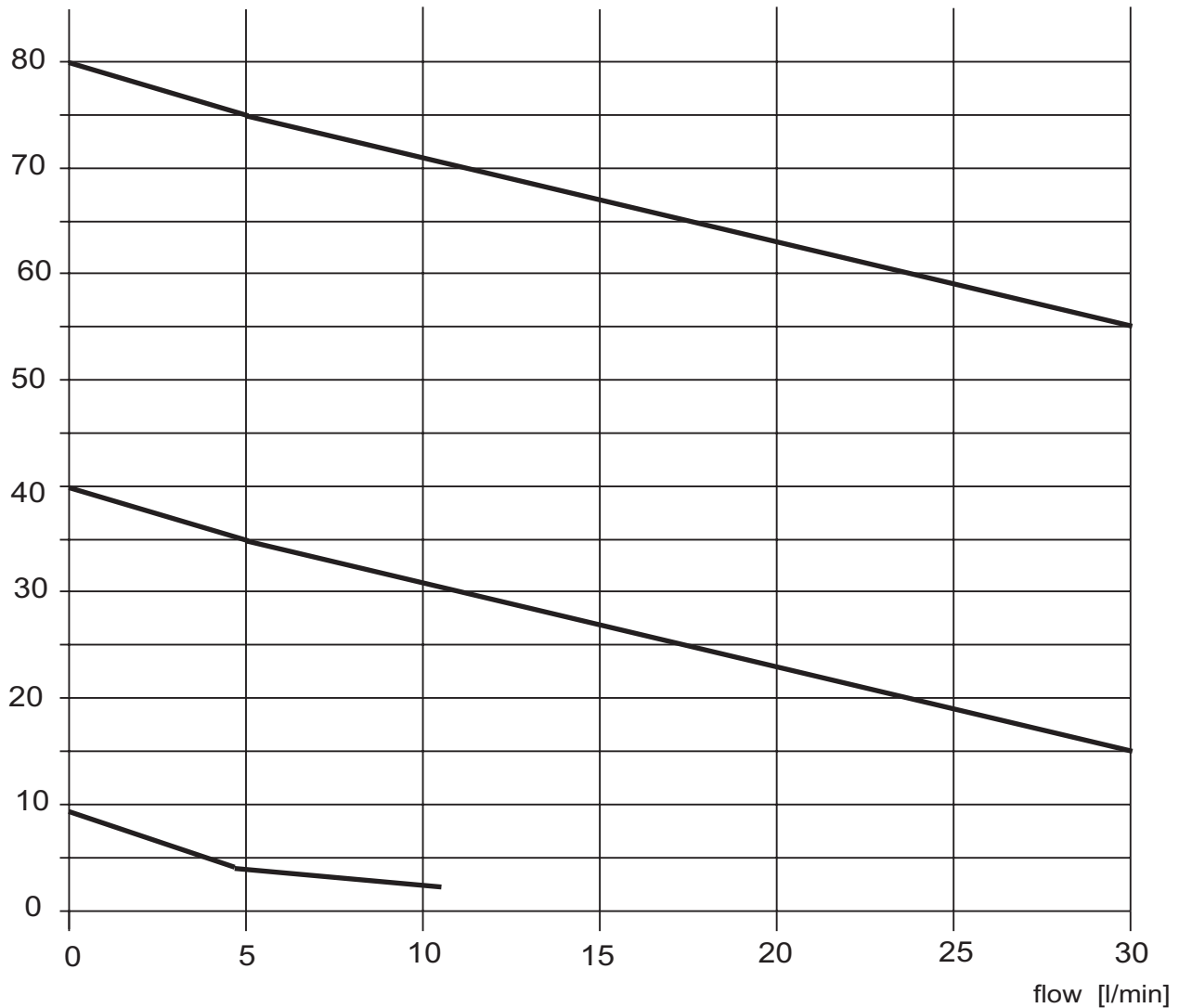
## Pressure-reduction valve NG 6

electrically adjustable,  
pressure range 8-80 bar

### Control characteristic:

for hydraulic oil 46 mm<sup>2</sup>/s, 40°C

pressure [bar]



The specifications given herein are subject to alteration